

TOYOHASHI
LIVE

第7回 豊橋ライブデモンストレーションコース

症例集





DCA Case-1

60's male / Target Lesion: prox. LAD

Diagnosis: AP, OMI, PAD, CKD, CHF

Prior intervention:

'17.03.17 EES (mid. RCA AMI),
other hospital

'17.05.08 EVT Stent (Rt. CIA CTO)

'17.05.15 ZES (mid. LCX subtotal)

Coronary risk factor:

**Dyslipidemia, Current smoking,
Family history**

eGFR: 55.5

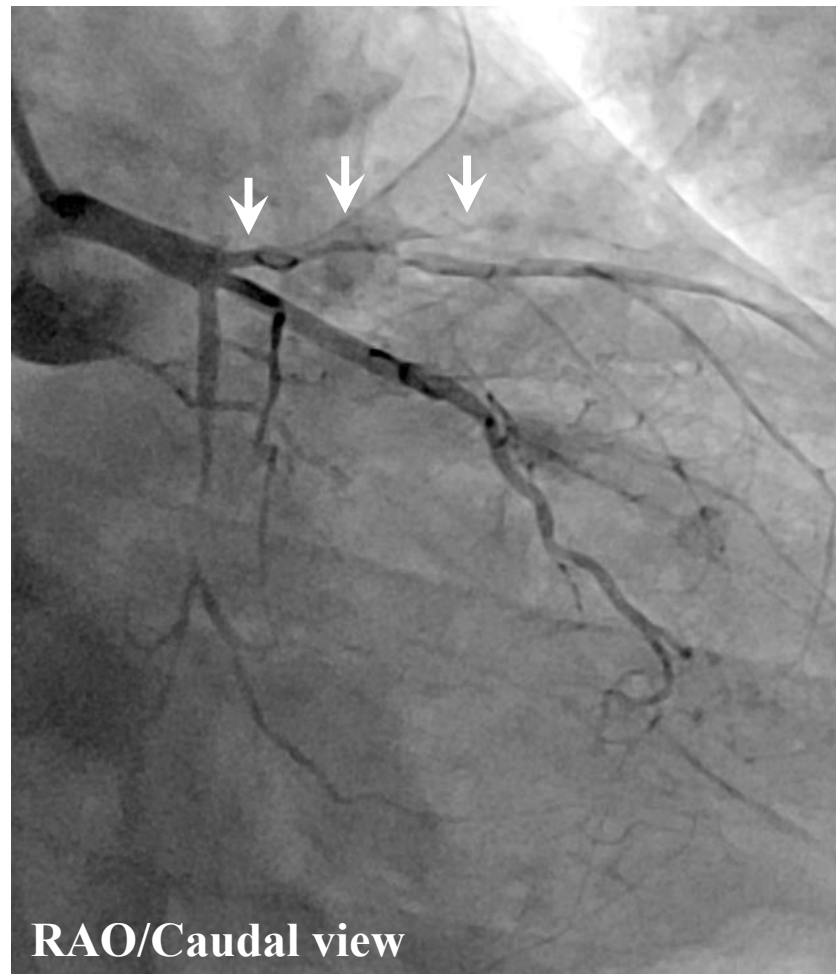
SYNTAX Score: 17

Final CAG findings: '17.05.08

CAG: prox. LAD 99%

mid. LCX 99% → 0% (Stent)

LV EF (UCG): 24%





DCA Case-2

60's male / Target Lesion: prox. LAD

Diagnosis: AP

Prior intervention:

'17.05.08 BES (prox. LCX)

DCB (mid. LCX)

Coronary risk factor:

DM, Family history

eGFR: 64.0

SYNTAX Score: 19.5

Final CAG findings: '17.05.01

CAG: prox. LAD 90%, 1st diagonal 90%

mid. LCX 100% → 0% (Stent)

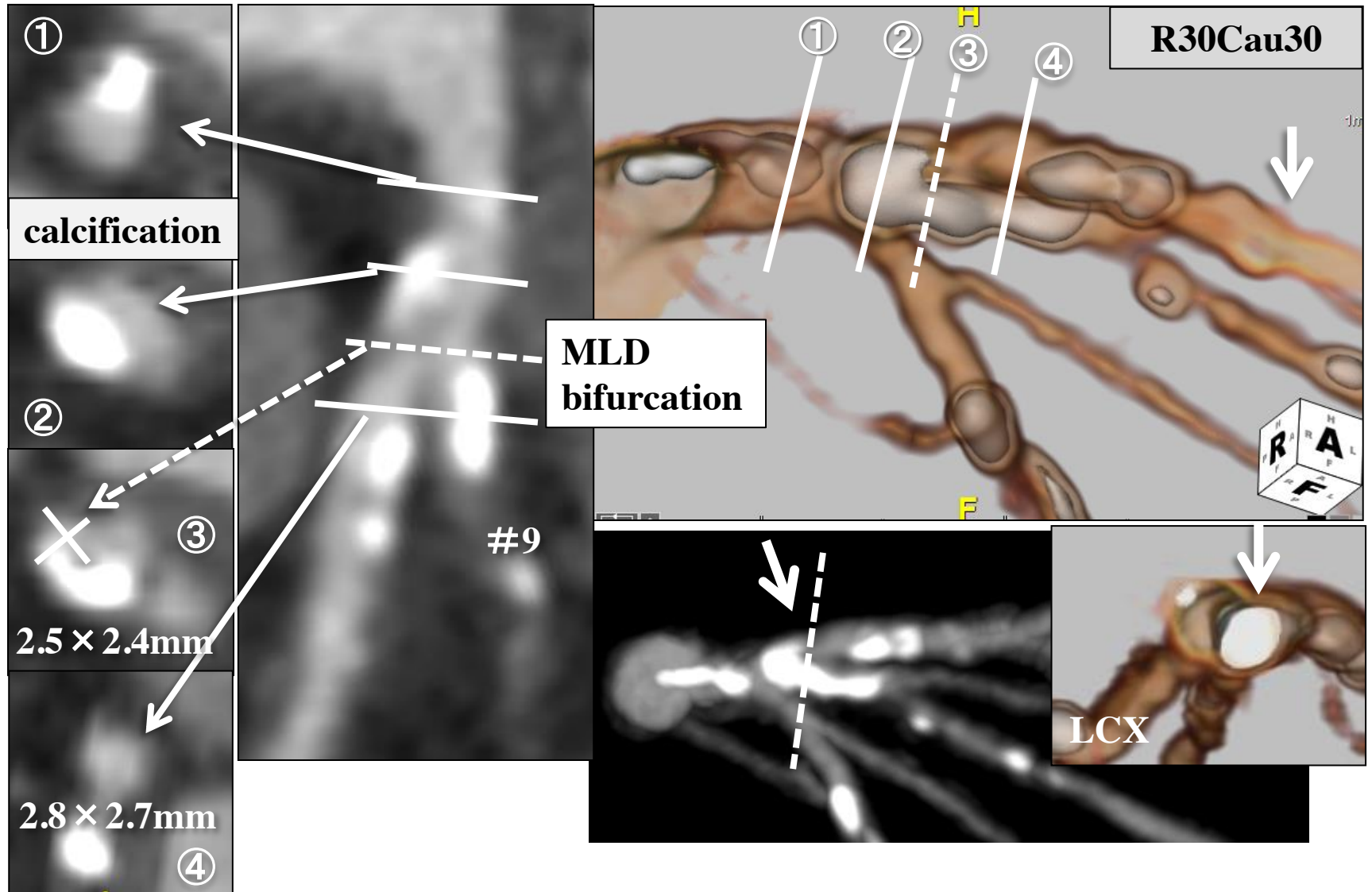
PD branch 90%

LV EF (UCG): 66.6%





DCA Case-2: CT





DCA Case-3

60's male / Target Lesion: ost. & prox. LAD

Diagnosis: AP

Prior intervention:

'16.09.21 ZES (prox. LAD)

Coronary risk factor:

DM, HT, Dyslipidemia,

Current smoking

eGFR: 50.6

SYNTAX Score: 12

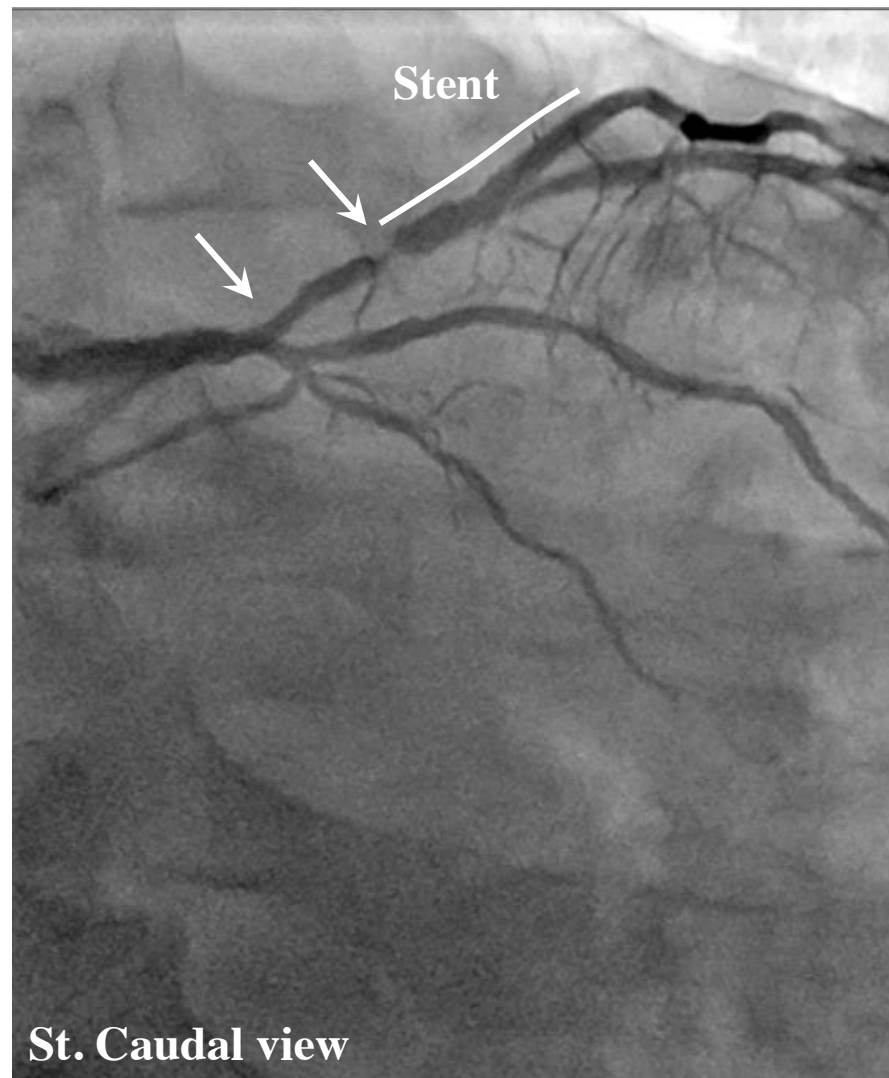
Final CAG findings: '17.05.15

CAG: prox. LAD 90% (ISR),

1st diagonal 75%,

LMT-prox. LAD 50%

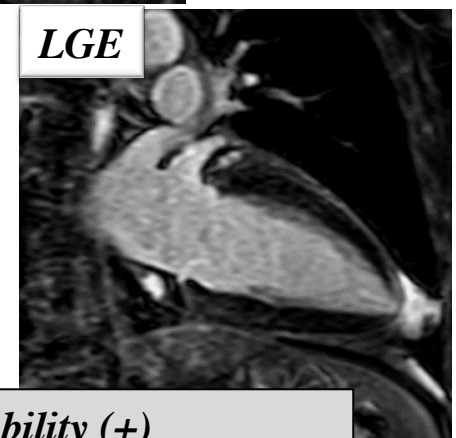
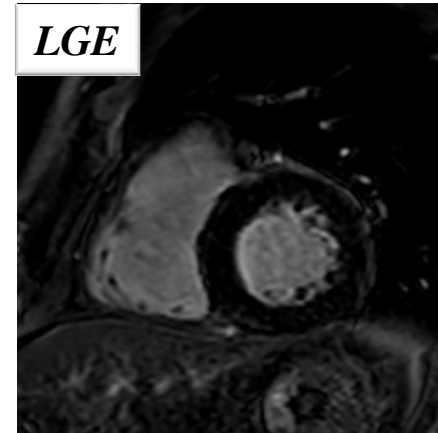
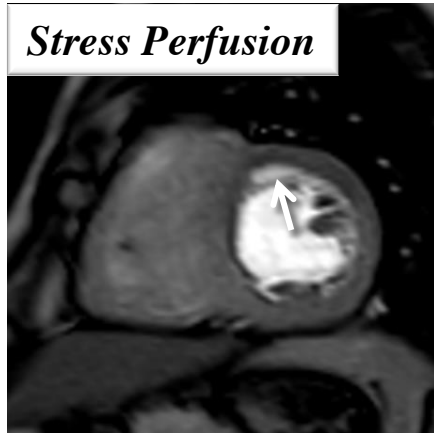
LV EF (UCG): 60.0%





DCA Case-3

60's male / Target Lesion: prox. LAD



Antero-septal: Myocardial ischemia (+)

LGE (-), Viability (+)



DCA Case-4

60's male / Target Lesion: prox. LAD

Diagnosis: AP

Prior intervention:

none

Coronary risk factor:

HT, Dyslipidemia

eGFR: 67.4

SYNTAX Score: 20

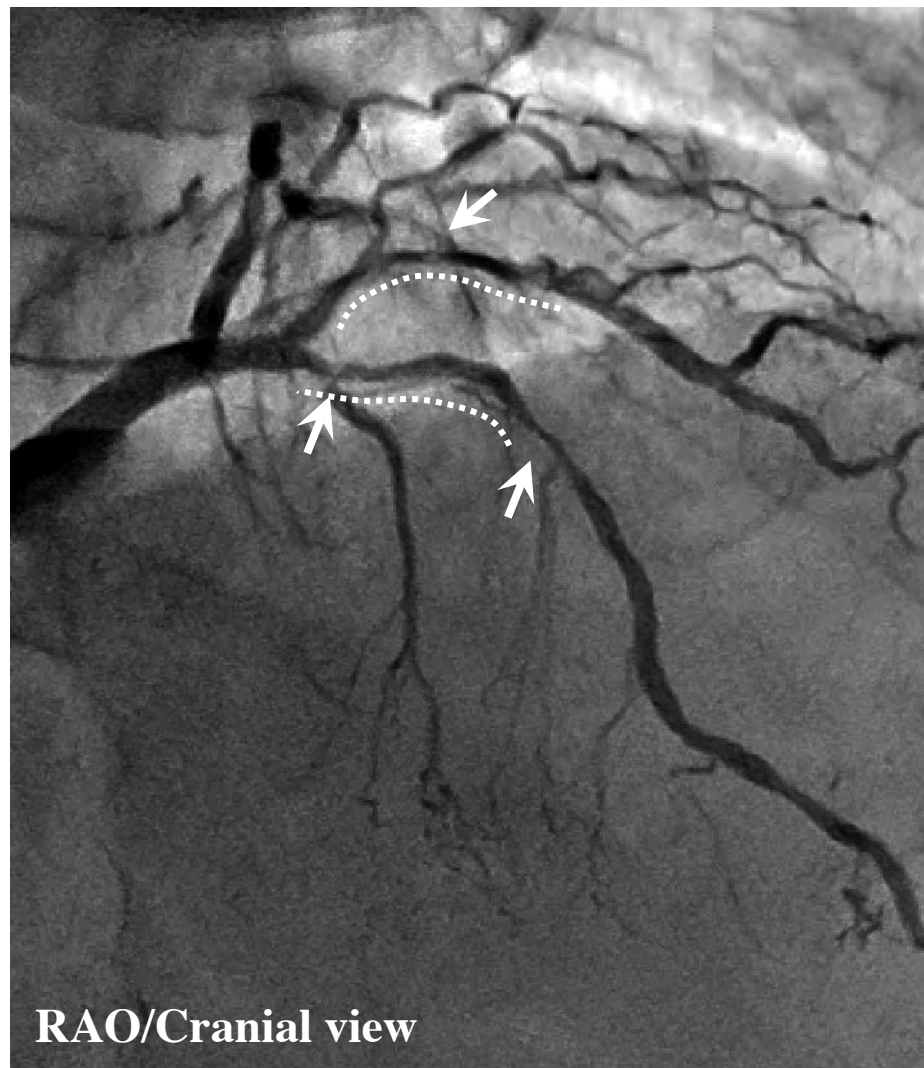
Final CAG findings: '17.05.19

CAG: prox. LAD 90%,

1st diagonal 75%,

mid. LCX 75%

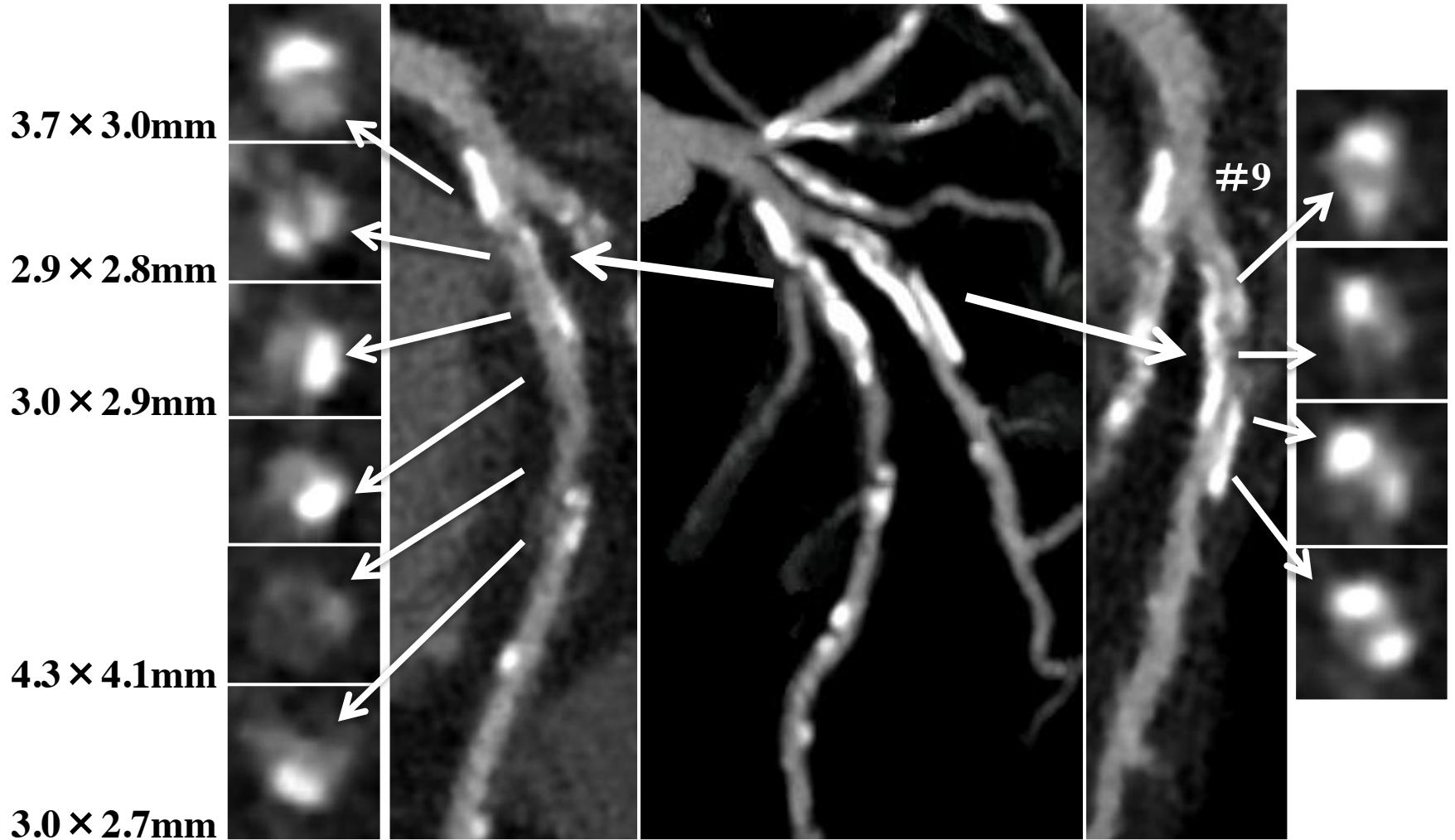
LV EF (UCG): 62.1%



RAO/Cranial view



DCA Case-4: CT





DCA Case-5

70's male / Target Lesion: Ost. & mid. LAD

Diagnosis: AP, PAD, CKD

Prior intervention:

**'17.05.16 EES × 2 (dis. LCX)
POBA+DCB (PL)**

Coronary risk factor:

DM

eGFR: 58.8

SYNTAX Score: 26

Final CAG findings: '17.05.16

CAG: Ost. LAD 75%, mid. LAD 90%,

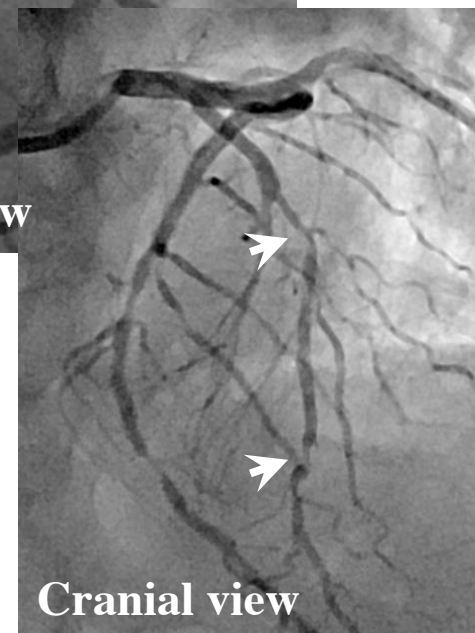
1st & 2nd diagonal 90%,

dis. LCX 90% → 0% (Stent),

PL: 90% → 25% (POBA),

RCA hypoplasty

LV EF (UCG): 60.0%





*Diffuse &
calcification*

Case-1

70's female / Target Lesion: prox. LAD

Diagnosis: AP

Prior intervention:

none

Coronary risk factor:

none

eGFR: 65.2

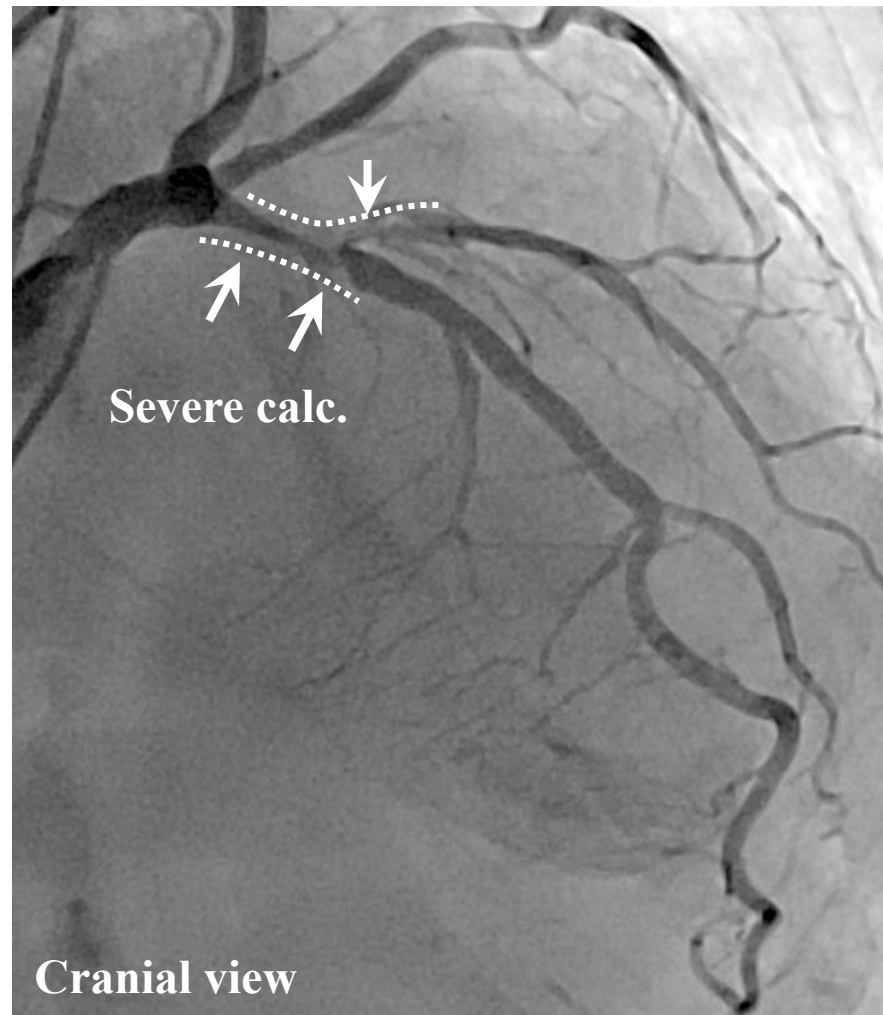
SYNTAX Score: 13

Final CAG findings: '17.04.20

CAG: prox. LAD 90%,

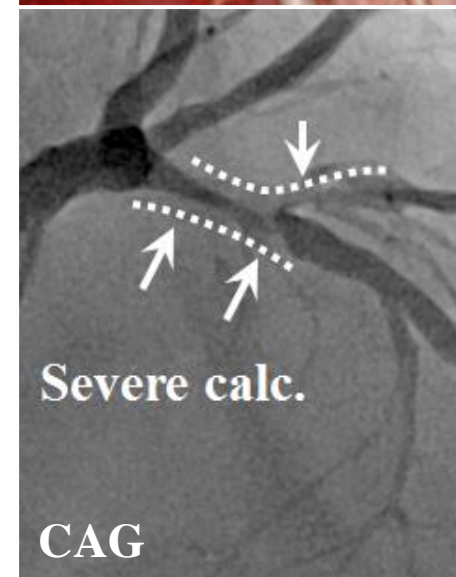
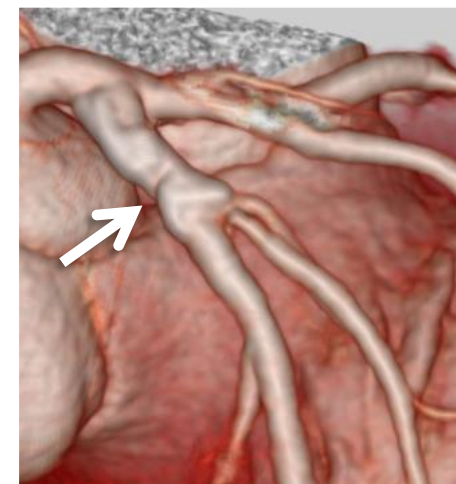
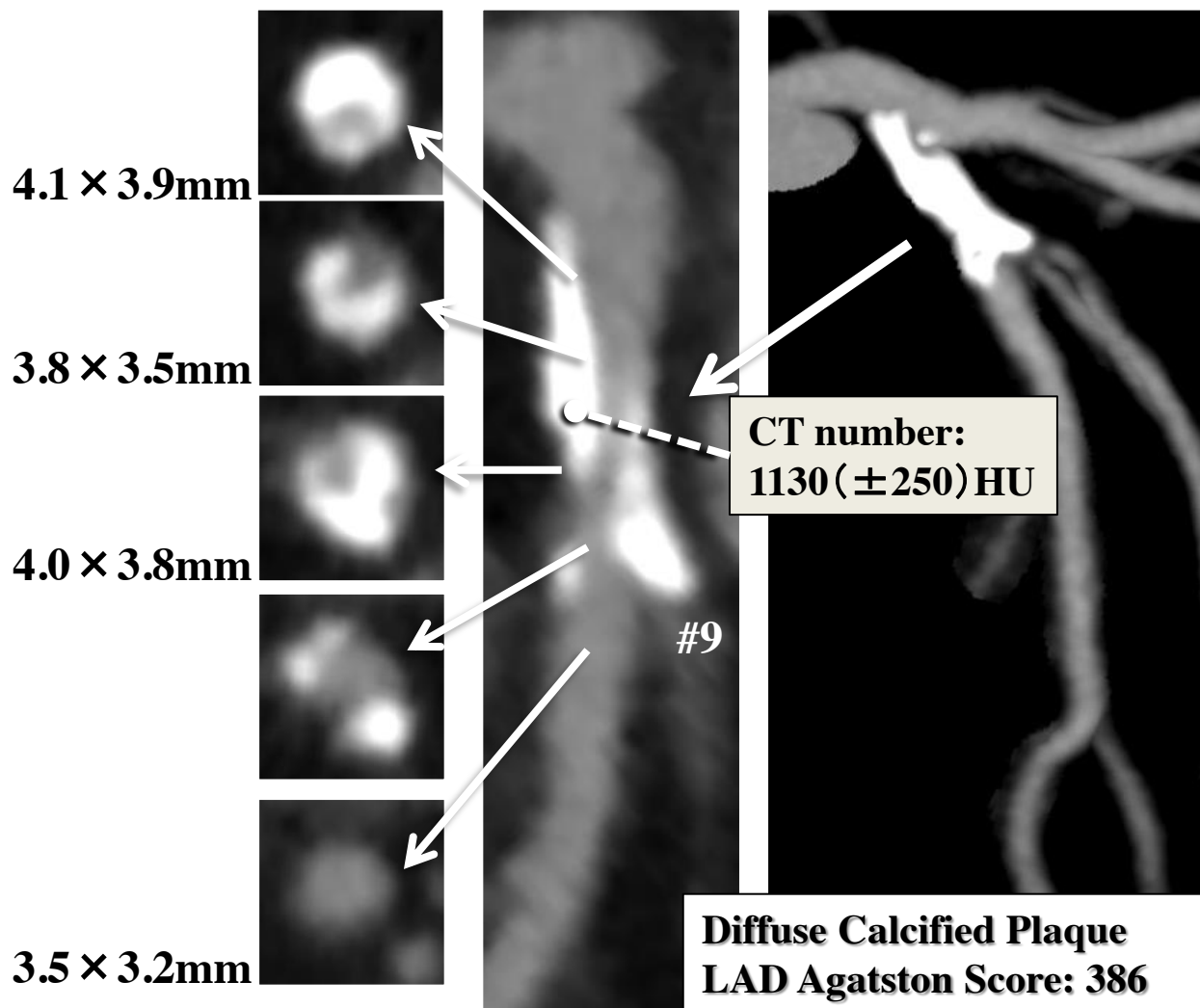
1st diagonal 90%

LV EF (UCG): 66.6%, moderate MR



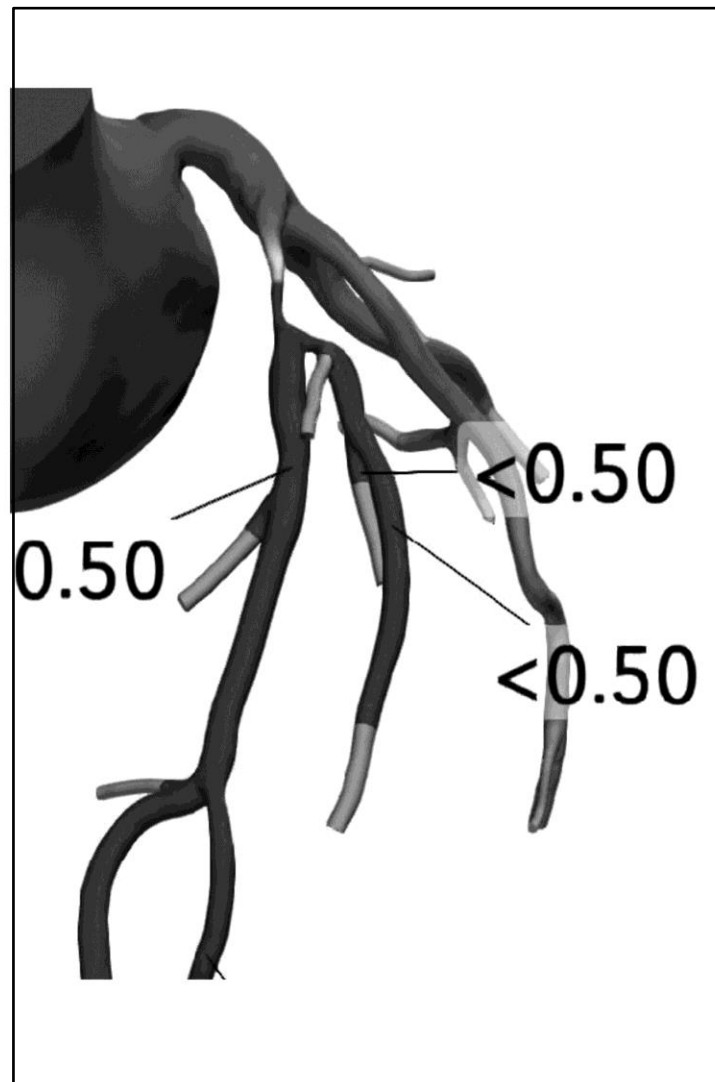
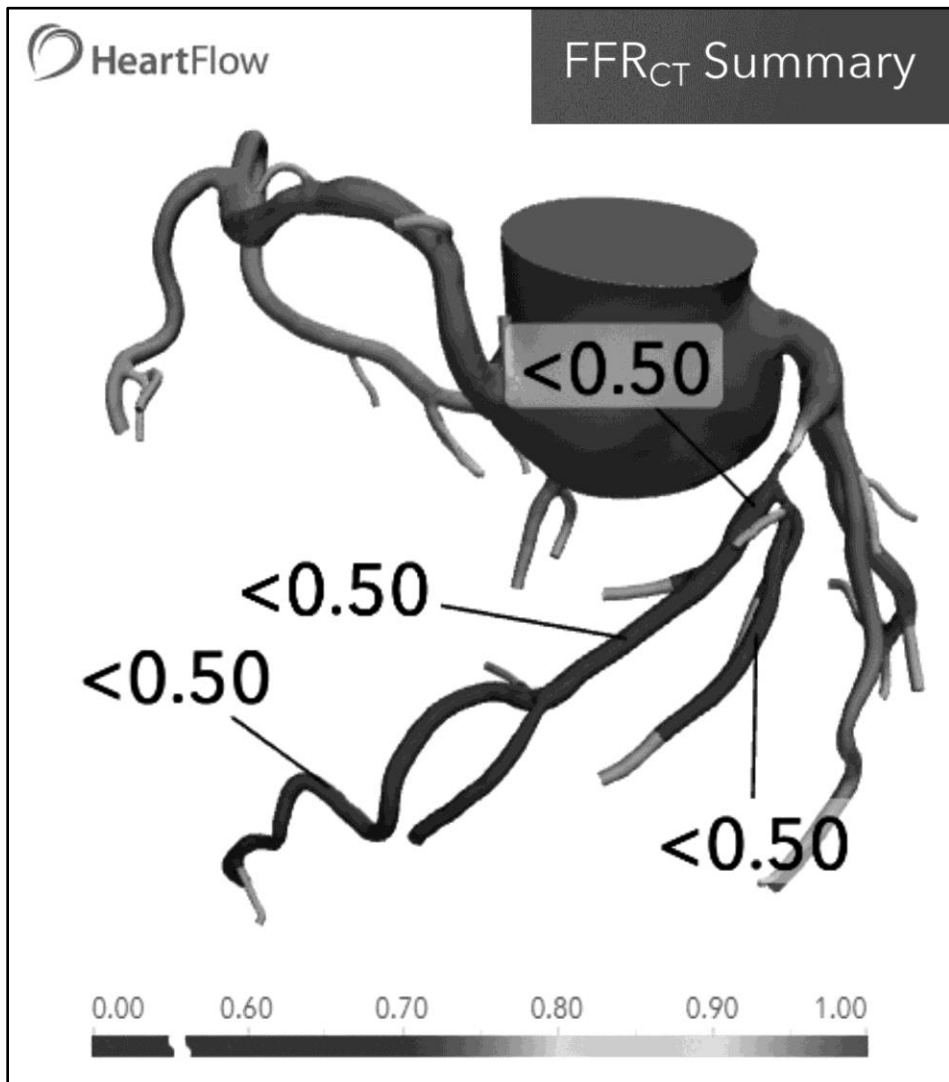


Diffuse & calcification Case-1: CT





Diffuse & calcification Case-1: FFR-CT

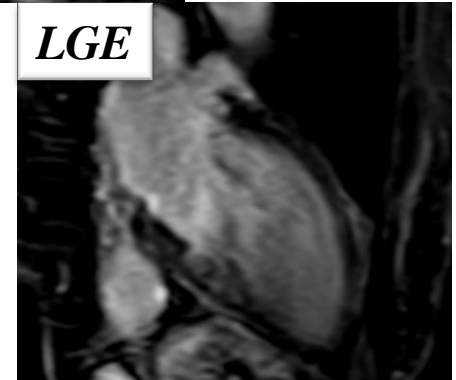
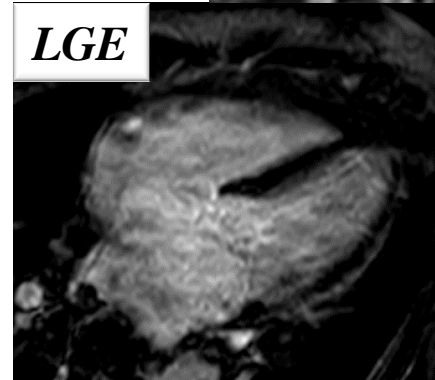
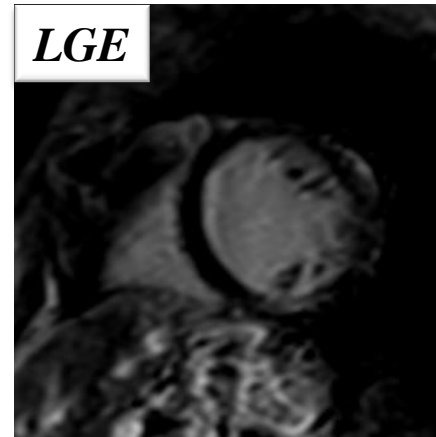
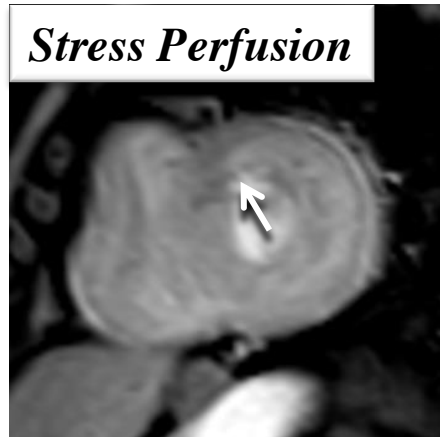




*Diffuse &
calcification*

Case-1

70's female / Target Lesion: prox. LAD bifur.



Antero-septal: Myocardial ischemia (+)

LGE (-), Viability (+)



*Diffuse &
calcification*

Case-2

70's male / Target Lesion: prox. LAD

Diagnosis: AP, PAD, CKD

Prior intervention:

'17.03.16 EVT Stent (bilat. EIA)
EVT POBA (Lt. SFA & pop.)

'17.03.23 Rota+EES (mid. RCA)

Coronary risk factor:

HT, Past smoking

eGFR: 46.9

SYNTAX Score: 22

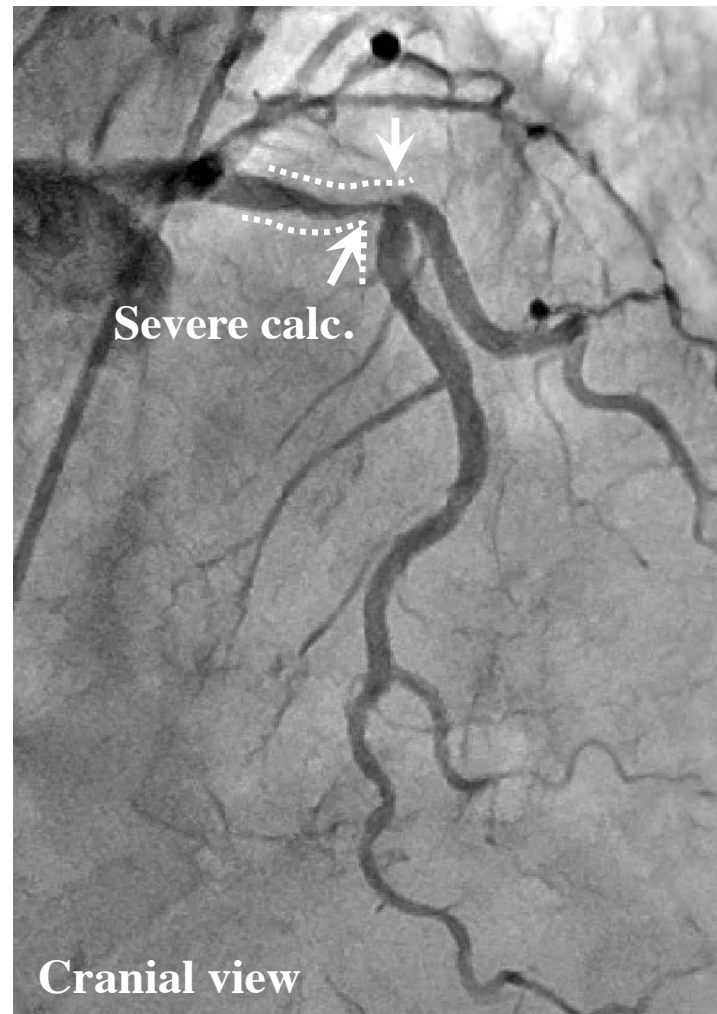
Final CAG findings: '17.03.16

CAG: prox. LAD 90%, 1st diagonal 90%,

mid. RCA 90% → 0% (Stent)

mid. LCX 75%

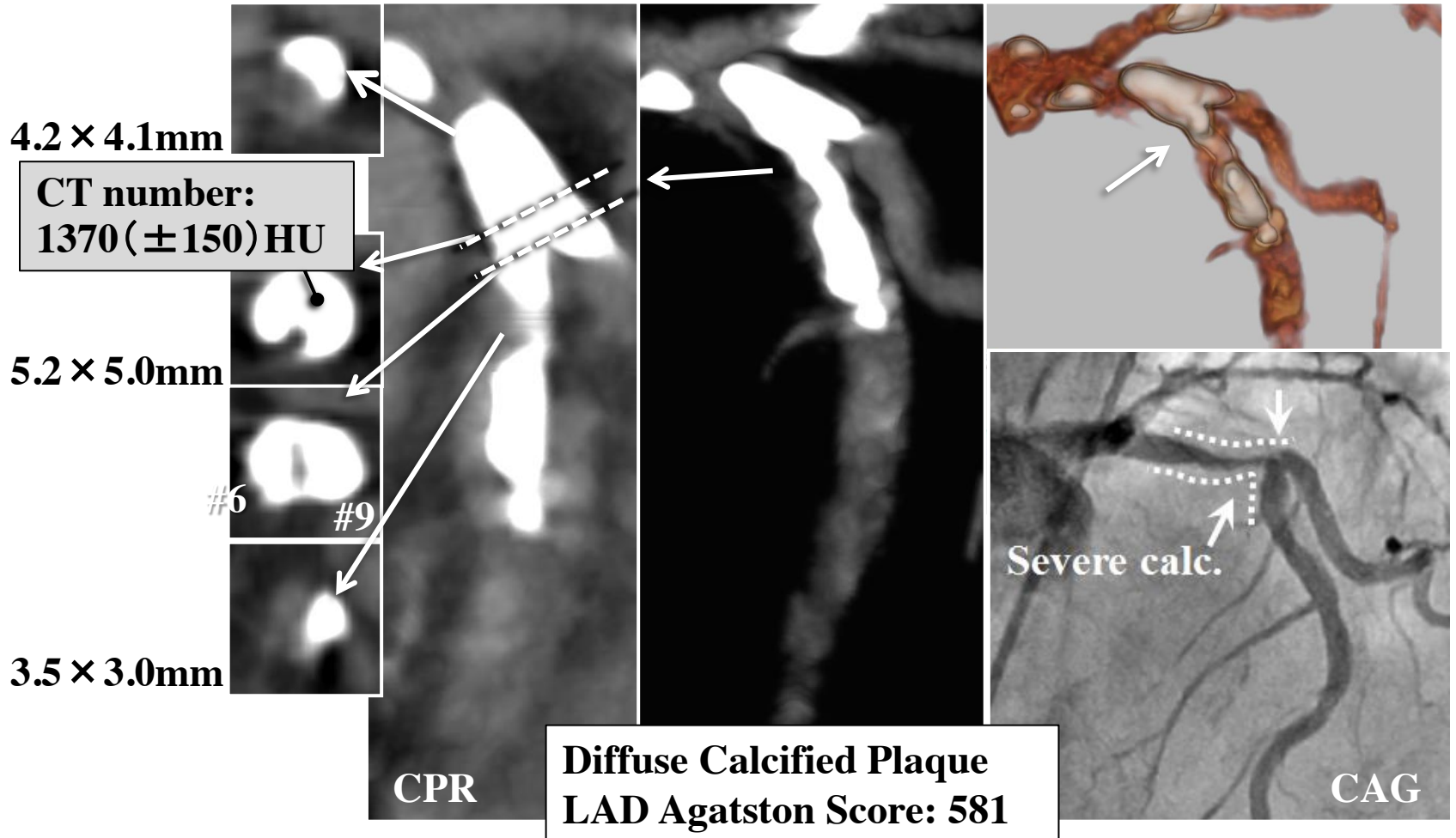
LV EF (UCG): 64.0%





Diffuse & calcification Case-2: CT

Plain CT





EVT Case-1

80's male / Target Lesion: Rt. CIA-pop. A CTO

Diagnosis: PAD, CKD

Prior intervention:

'06.04.20 Stent × 3 (Rt. SFA CTO)

Risk factor:

HT

eGFR: 31.1

Fontaine: 3

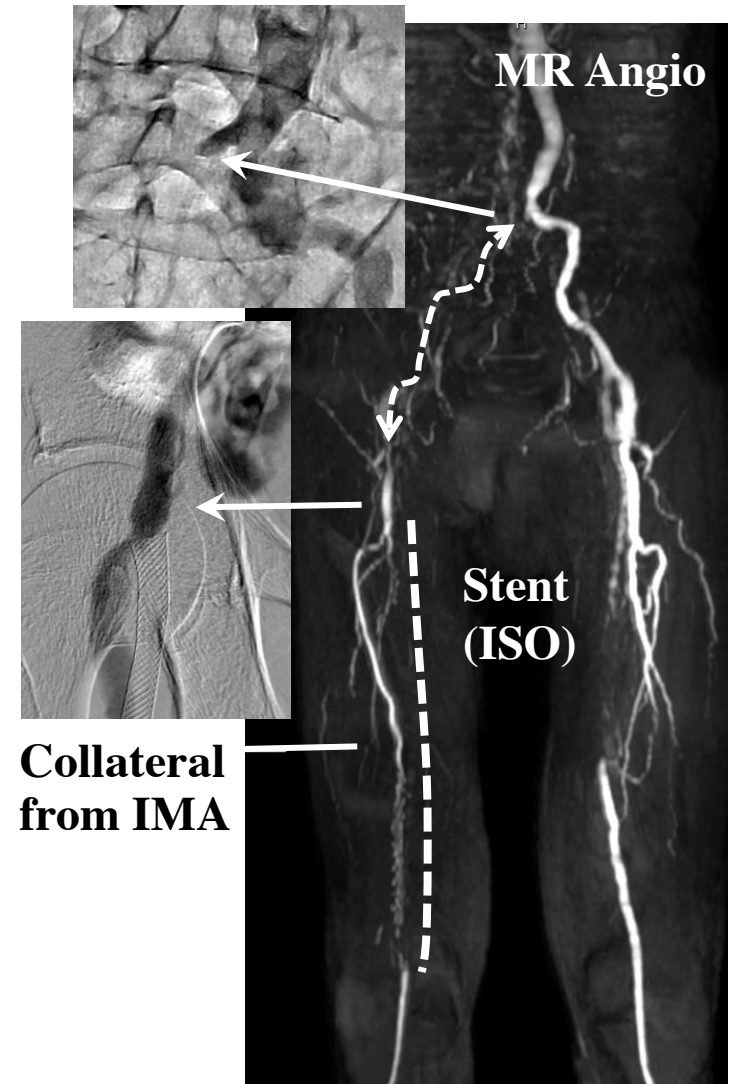
Rutherford: 4

ABI: Rt.: 0.56, Lt.: 0.67

Final AOG findings: '17.05.11

Rt.: CIA-EIA 100%, SFA-pop. 100%

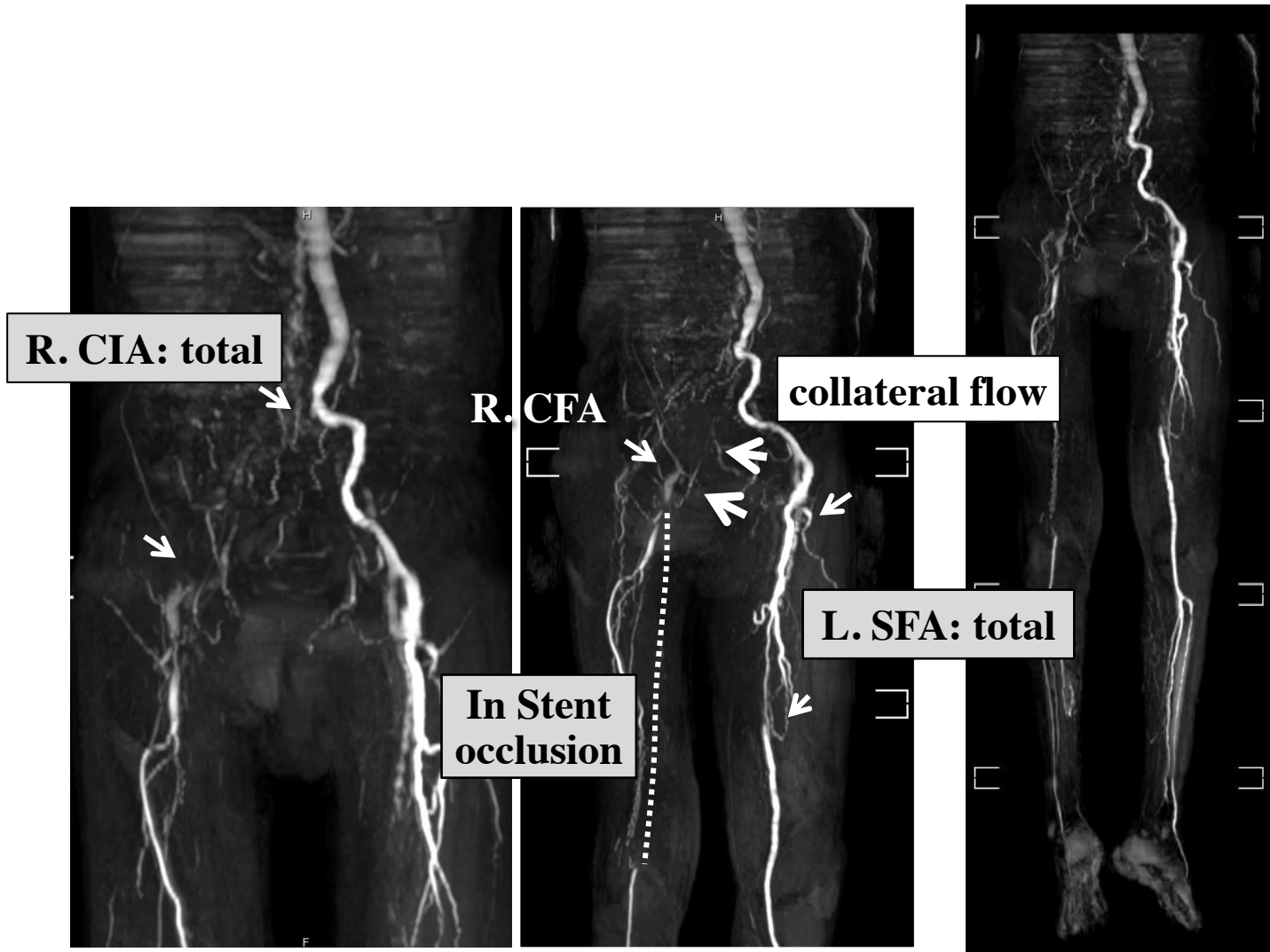
Lt.: SFA 100%





EVT Case-1

80's male / Target Lesion: Rt. CIA-pop. A CTO





EVT Case-2

80's male / Target Lesion: Lt. SFA

Diagnosis: PAD, CKD, AP, post CABG

Prior intervention:

'17.01.25 MICS CABG (LITA-LAD, SVG-HL-PD)

Risk factor:

DM, HT, Dyslipidemia, past smoking

eGFR: 45.2

Fontaine: 2

Rutherford: 2

ABI: Rt.: 0.73, Lt.: 0.49

Final MRA findings: '17.05.19

Rt.: SFA 50%, ATA 100%, PA 100%, PTA 90%

Lt.: SFA 100%, ATA 100%, PTA:100%





CTO Case-1

70's male / Target Lesion: prox. LAD

Diagnosis: AP, OMI, CKD

Prior intervention:

'17.02.25 BMS (prox. RCA AMI)

'17.03.30 failure (prox. LAD CTO),
other hospital

Coronary risk factor:

DM, HT, Dyslipidemia,

Current smoking

eGFR: 45

SYNTAX Score: 37.5

J-CTO Score: 2

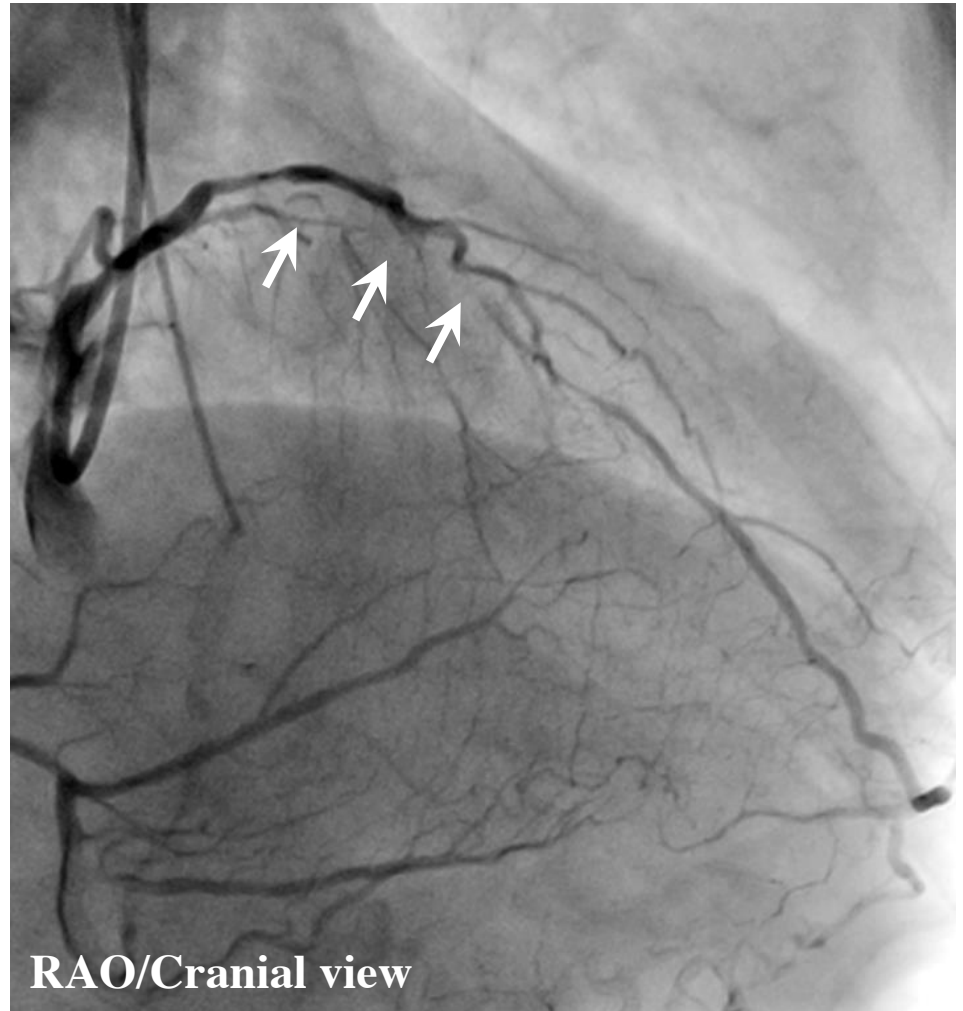
Final CAG findings: '17.03.30

CAG: prox. LAD 100%,

diagonal 100%,

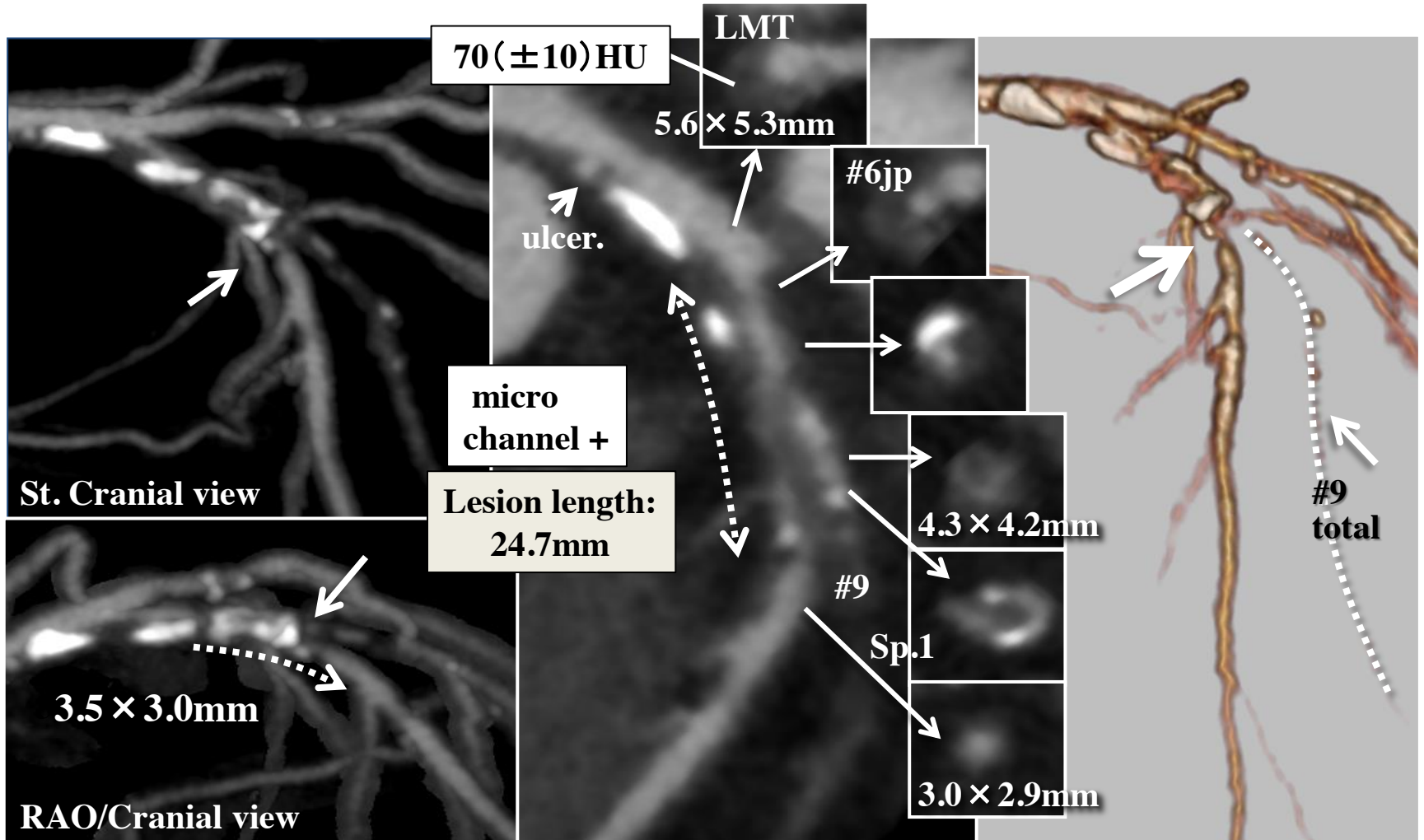
HL 90%

LV EF (UCG): 70.5%





CTO Case-1: CT





CTO Case-2

60's male / Target Lesion: mid. RCA

Diagnosis: AP

Prior intervention:

- '17.03.09 failure (prox. RCA CTO),
other hospital
- '17.03.09 BES (prox. LAD)
BES (1st diagonal)

Coronary risk factor:

- Dyslipidemia, past smoking,
Family history

eGFR: 56.5

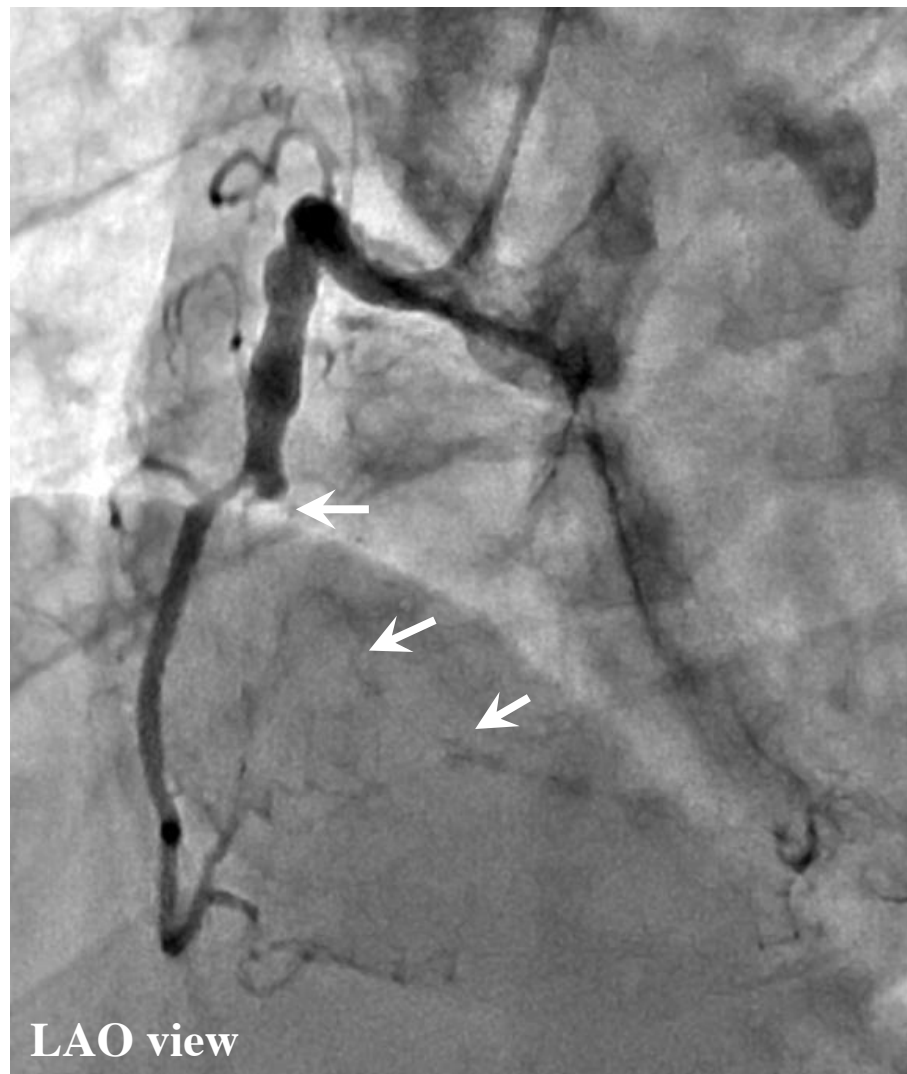
SYNTAX Score: 21

J-CTO score: 2

Final CAG findings: '17.04.10

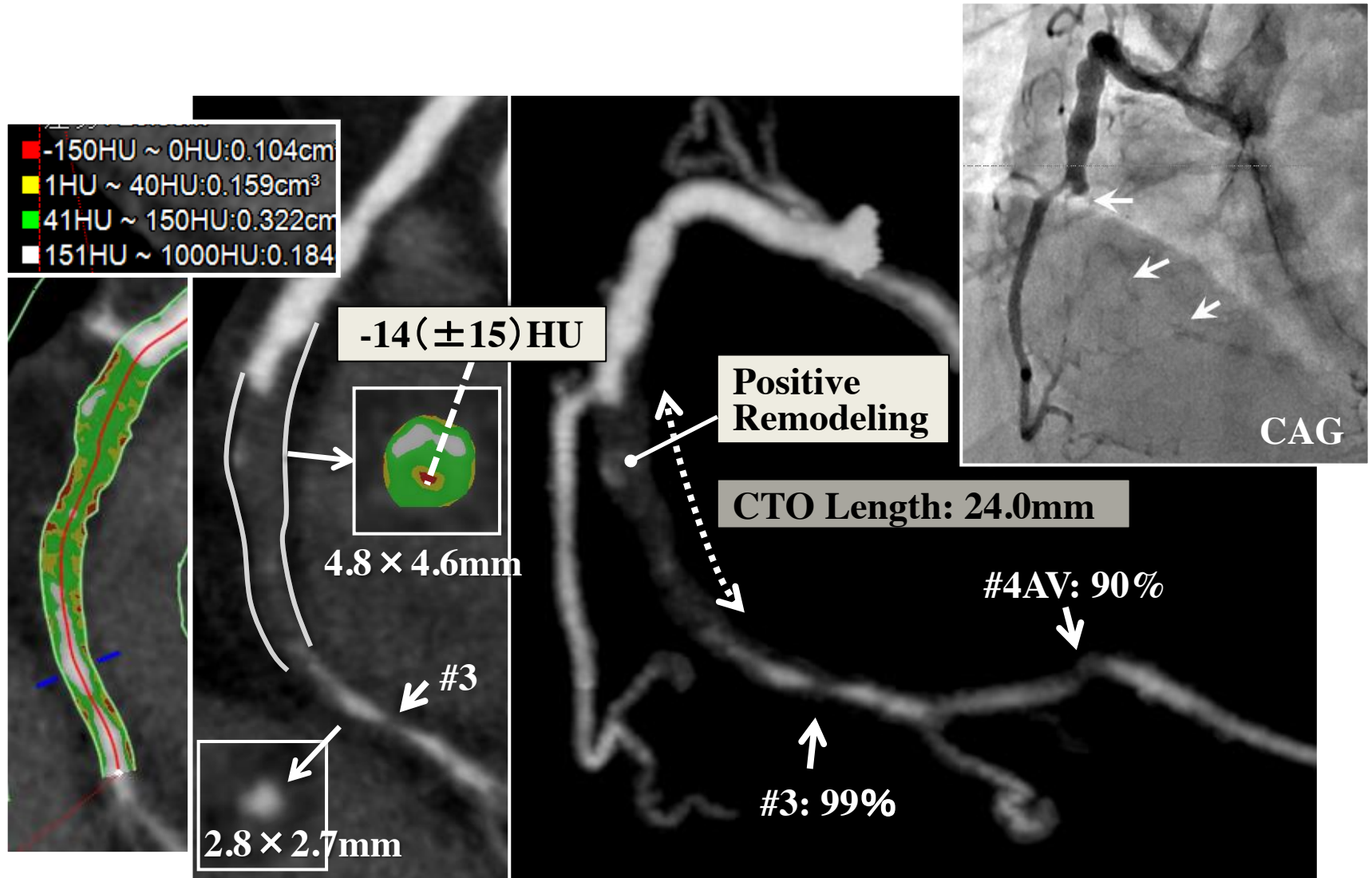
- CAG: mid. RCA 100%
prox. LAD 90% → 0% (Stent),
1st diagonal 90% → 0% (Stent)

LV EF (UCG): 50.0%





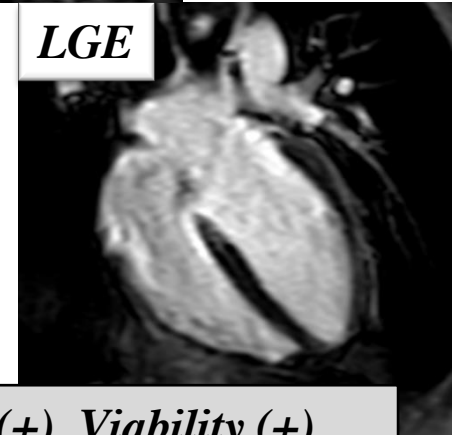
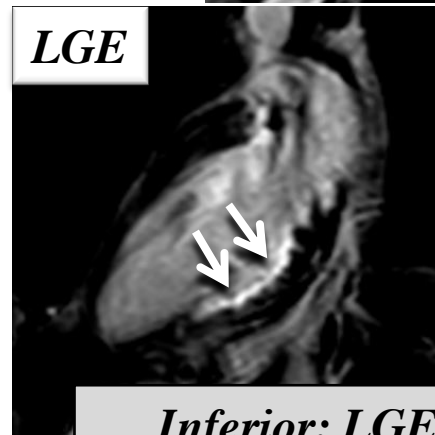
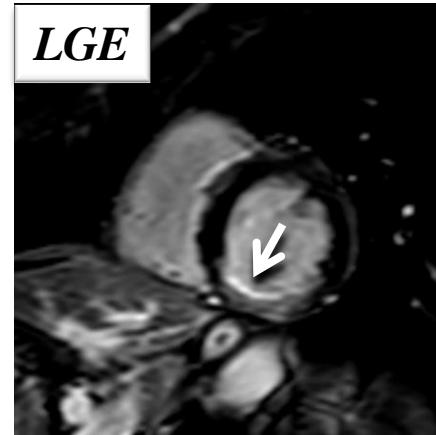
CTO Case-2: CT





CTO Case-2

60's male / Target Lesion: prox. RCA



Inferior: Myocardial ischemia (+)

Inferior: LGE (+), Viability (+)



CTO Case-3

50's male / Target Lesion: mid. LAD

Diagnosis: AP

Prior intervention:

**'17.02.14 ZES (prox. LCX)
failure (PL branch CTO)**

Coronary risk factor:

**Dyslipidemia, Family history,
Current smoking**

eGFR: 85.5

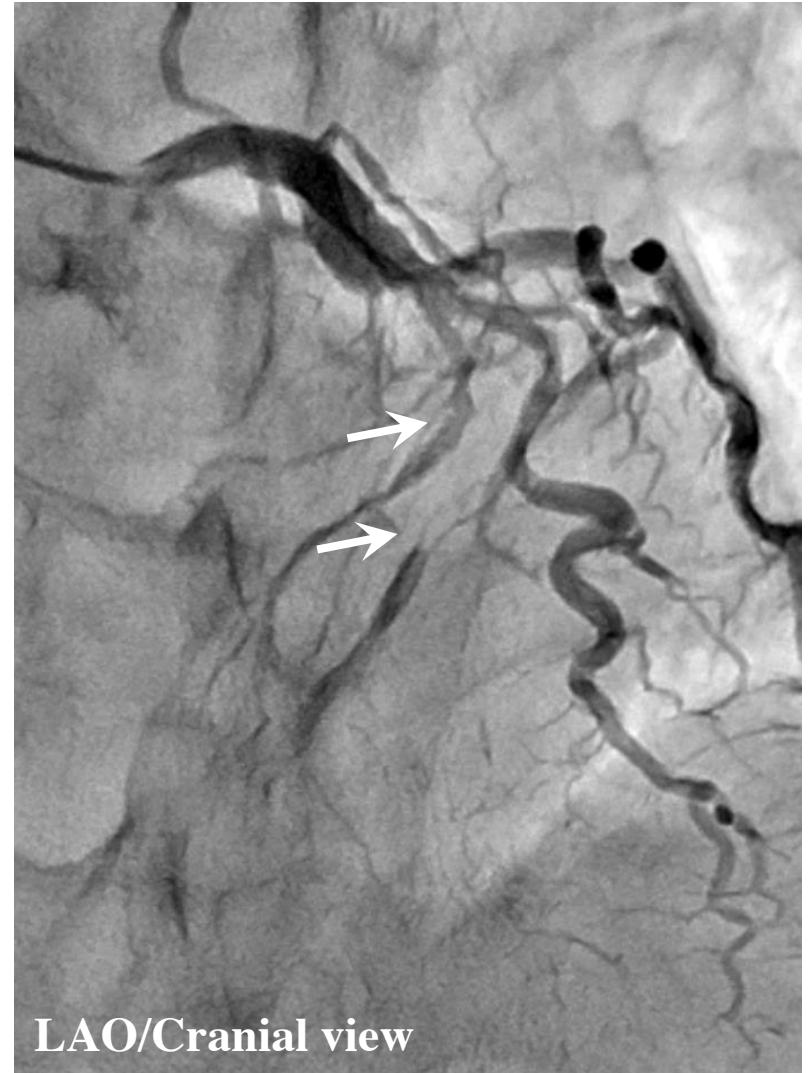
SYNTAX Score: 39

J-CTO score: 2

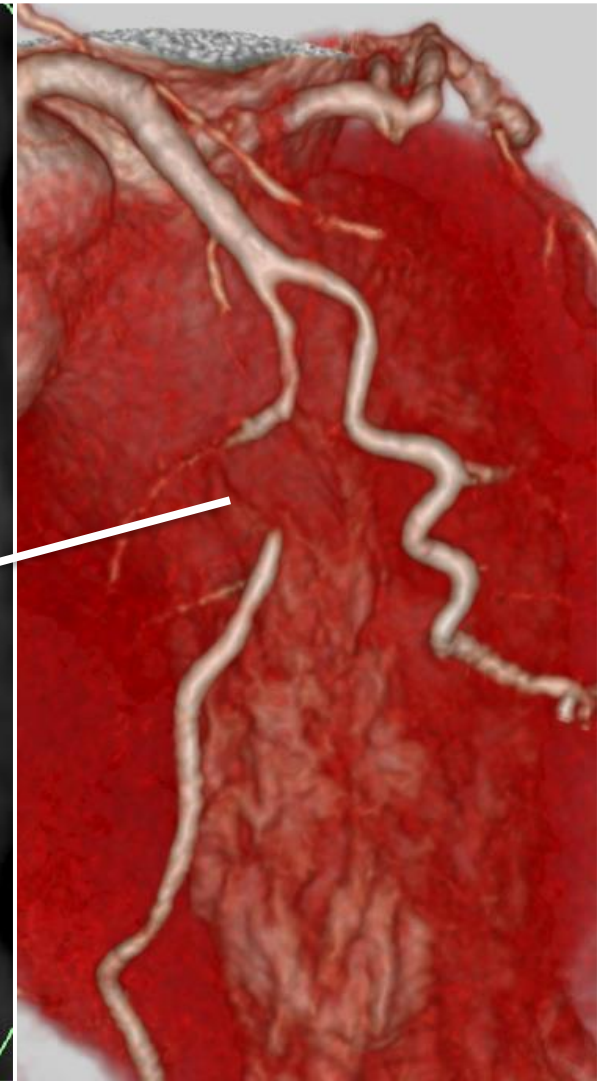
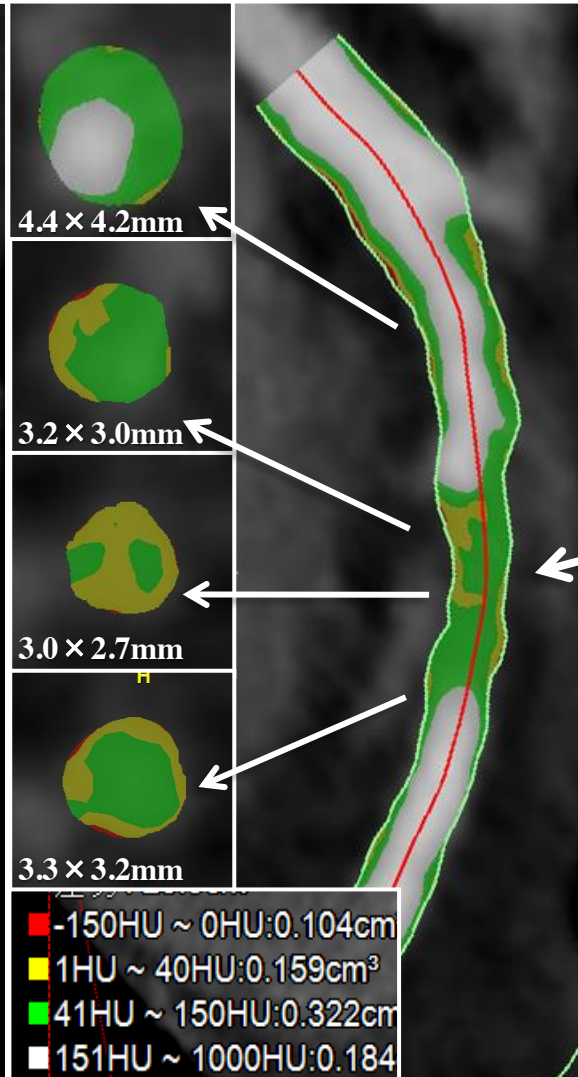
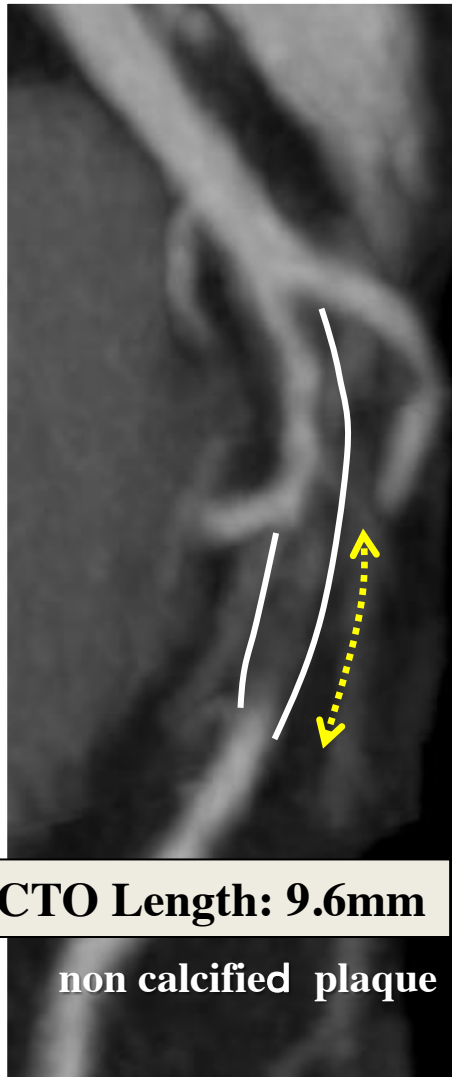
Final CAG findings: '17.01.10

**CAG: mid. LAD 100%,
prox. LCX 90% → 0% (Stent),
OM 75%, #4PL subtotal (failure)**

LV EF (UCG): 60.0%



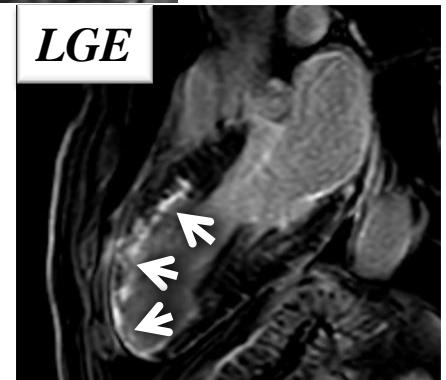
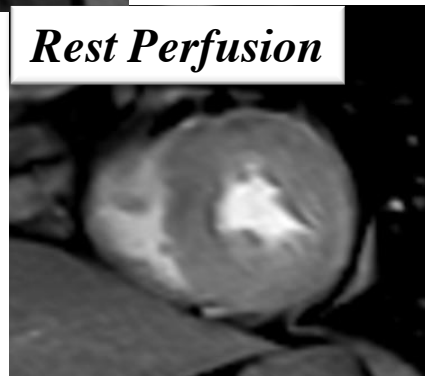
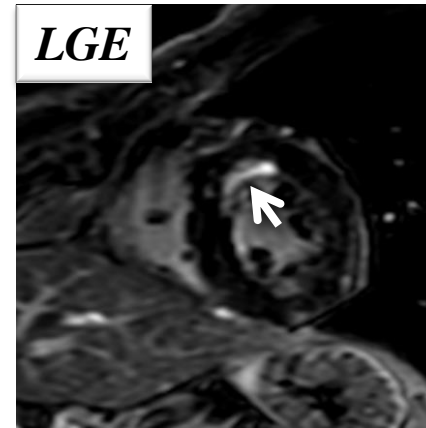
LAO/Cranial view





CTO Case-3

50's male / Target Lesion: LAD



Antero-septal: Myocardial ischemia (+)

Antero-septal: LGE (+), Viability (+)



CTO Case-4

70's male / Target Lesion: dis. RCA

Diagnosis:

OMI, AAA (48.5 × 47.3mm)

Prior intervention:

**'99 Stent (mid. RCA AMI),
other hospital**

Coronary risk factor:

**HT, Dyslipidemia, Family history
eGFR: 65.1**

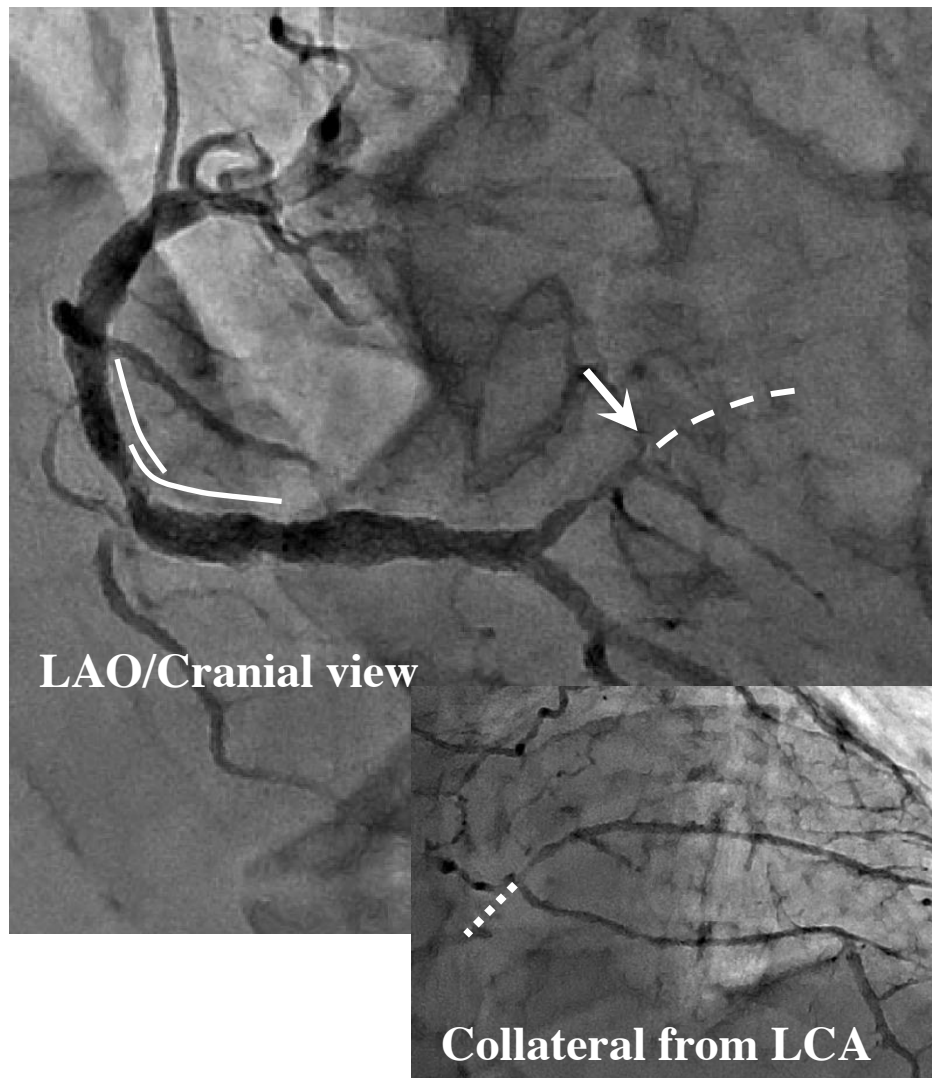
SYNTAX Score: 19.5

J-CTO score: 0

Final CAG findings: '17.05.11

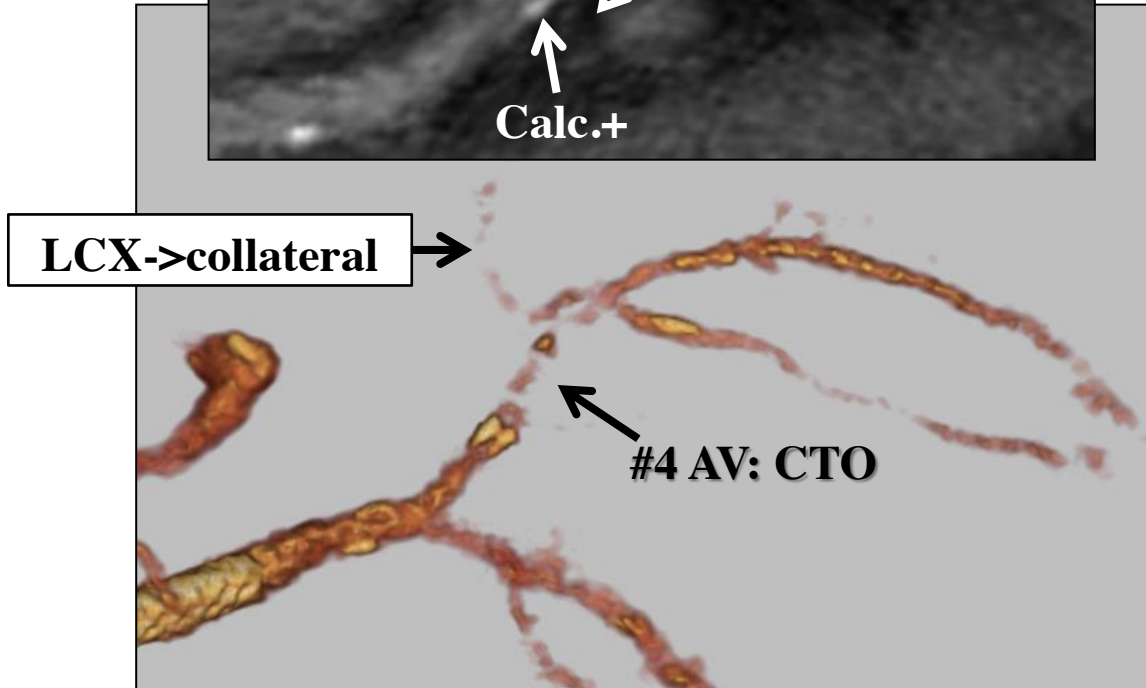
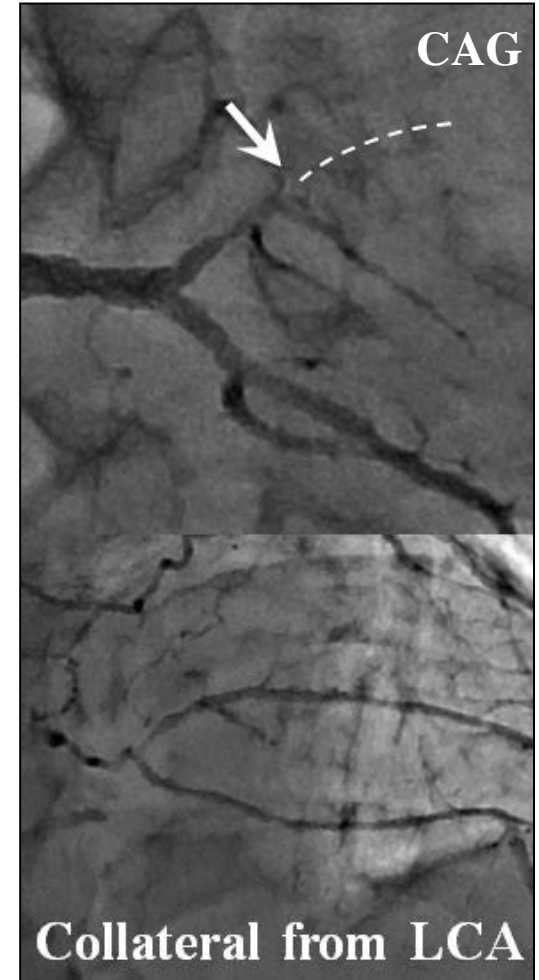
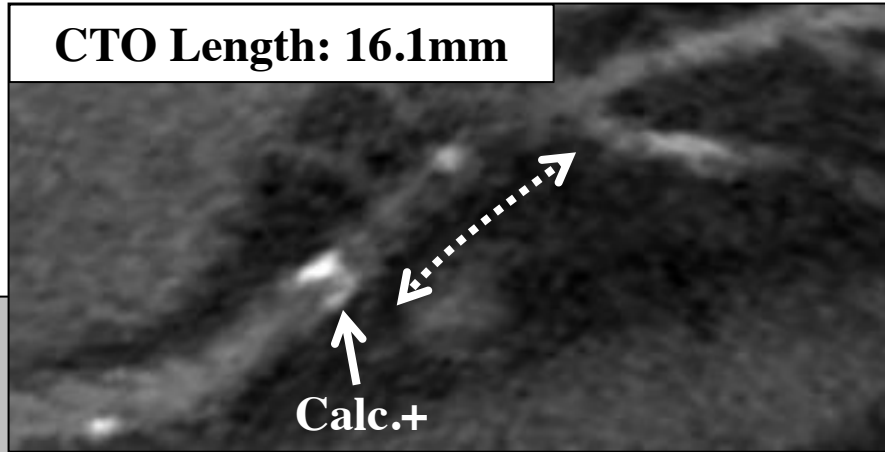
**CAG: PL branch 100%,
mid. RCA 75% (ISR),
mid. LAD 75%,
prox. LCX 75%,
HL 90%**

LV EF (UCG): 47.0%





CTO Case-4: CT





Bifurcation Case-1

60's male / Target Lesion: prox. LAD

Diagnosis: AP, PAD

Prior intervention:

'17.03.28 EVT Stent (Lt. CIA)

Coronary risk factor:

HT

eGFR: 62.9

SYNTAX Score: 22.5

J-CTO score: 1

Final CAG findings: '17.03.13

**CAG: prox. LAD 100%,
OM 90%, PD 90%**

LV EF (UCG): 60.5%

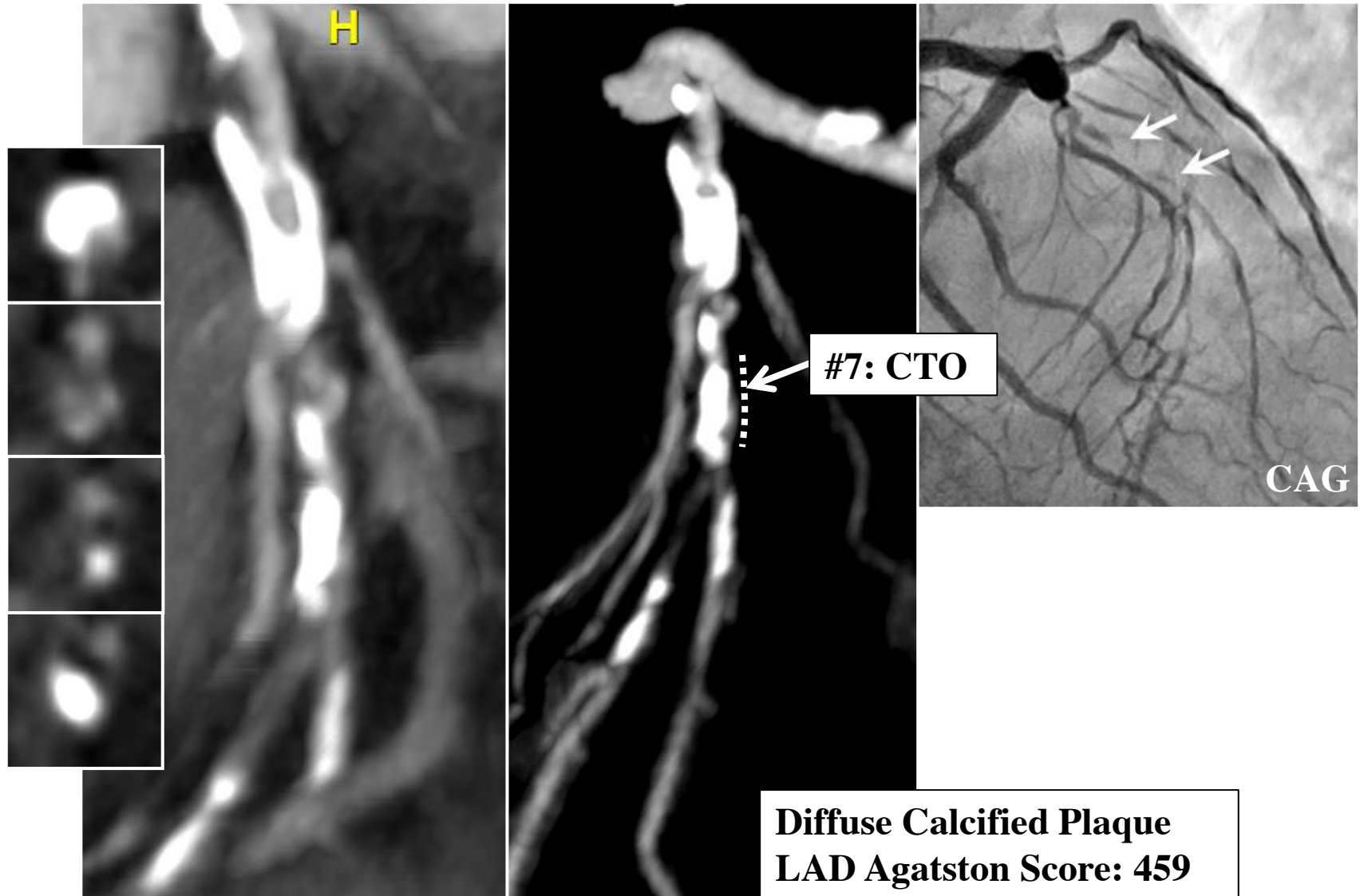


LAO/Cranial view

Cranial view



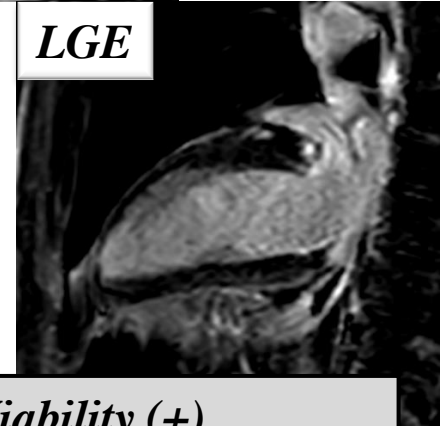
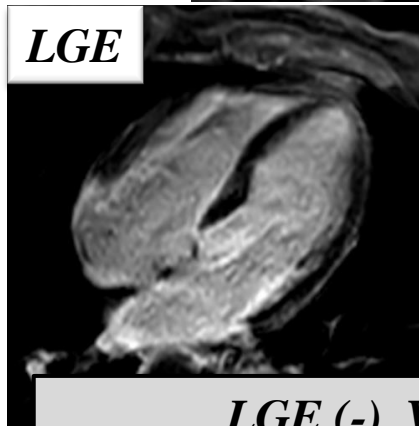
Bifurcation Case-1: CT





Bifurcation Case-1

60's male / Target Lesion: prox. LAD



*Antero-septal & Antero-Lateral:
Myocardial ischemia (+)*

LGE (-), Viability (+)



Bifurcation Case-2

70's male / Target Lesion: prox. LAD

Diagnosis: AP, Carotid A stenosis

Prior intervention:

none

Coronary risk factor:

DM, Dyslipidemia, Past smoking,

Family history

eGFR: 76.7

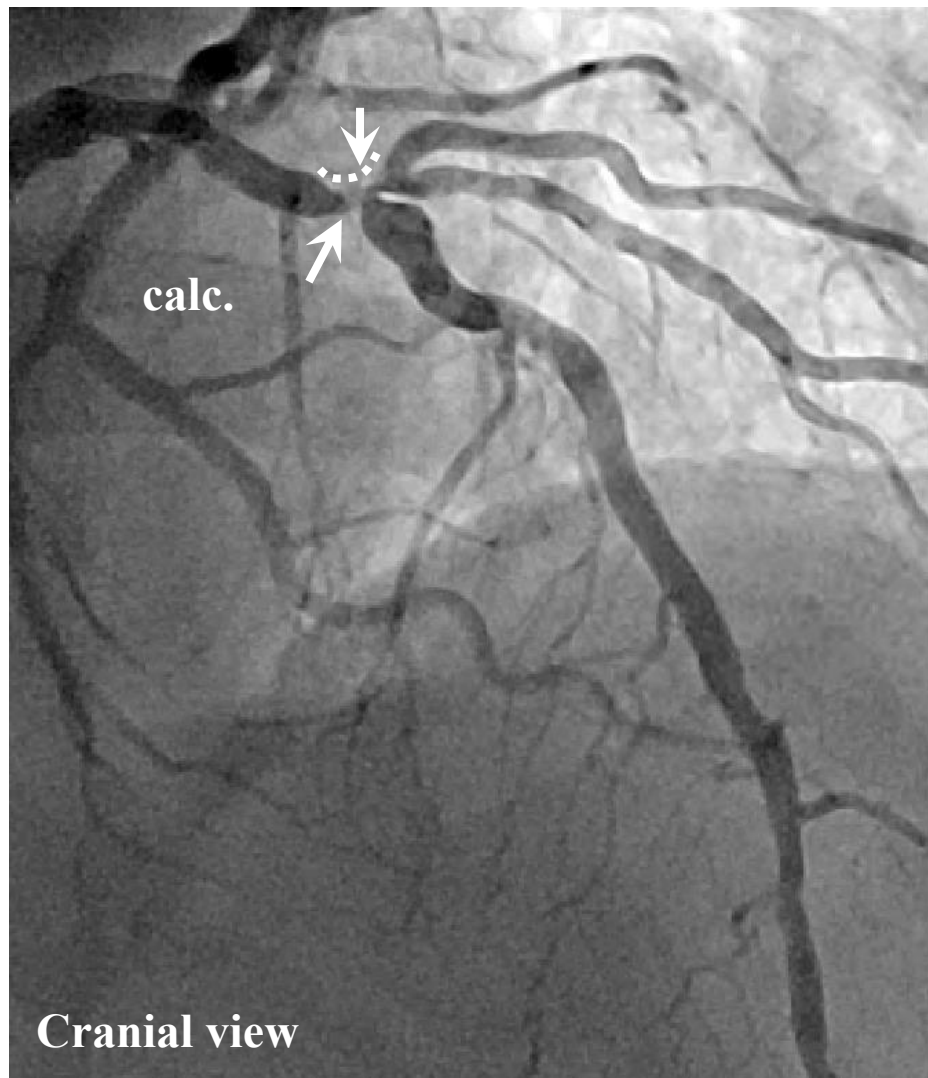
SYNTAX Score: 14

Final CAG findings: '17.04.19

CAG: prox. LAD 90%,

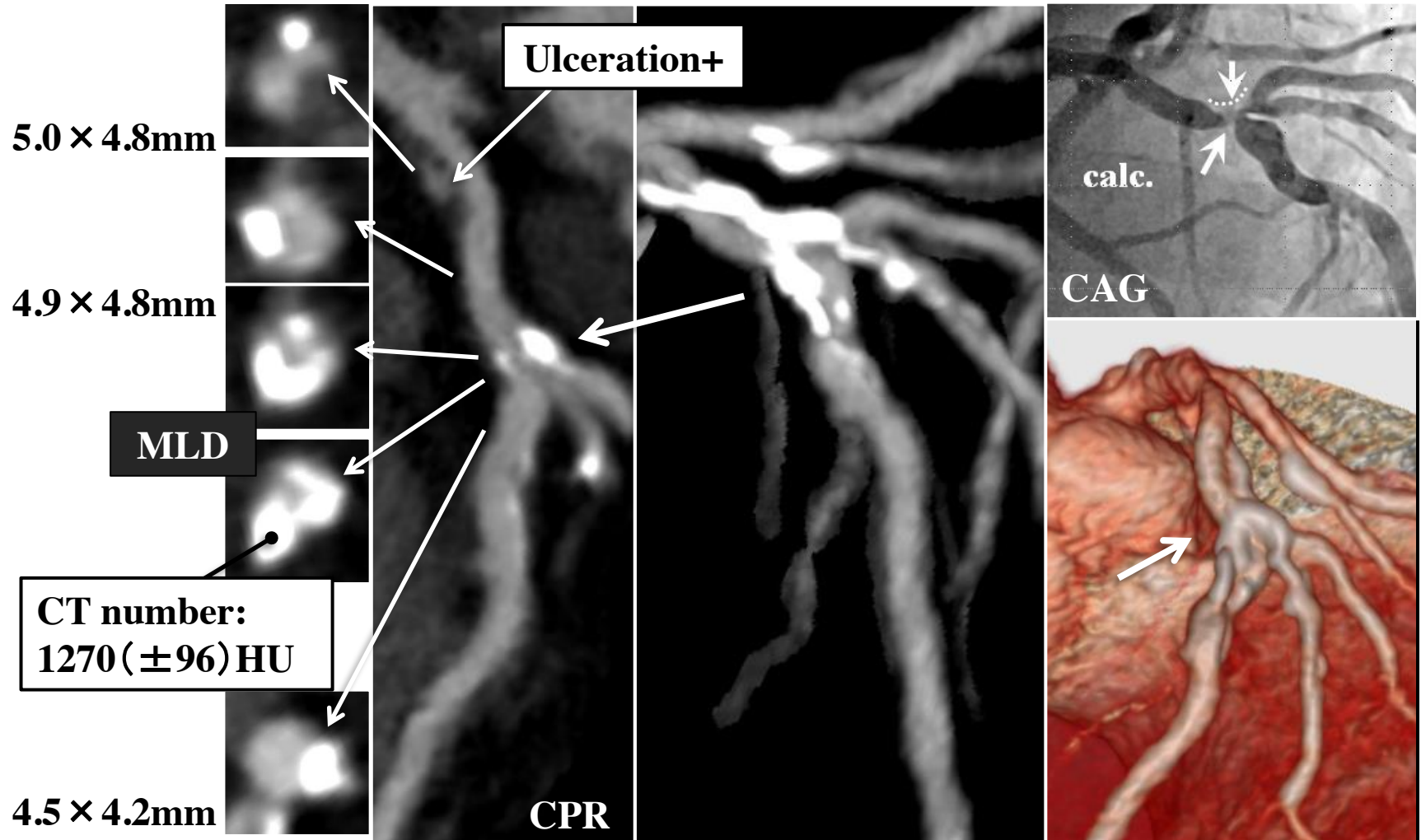
1st diagonal 90%

LV EF (UCG): 64.0%





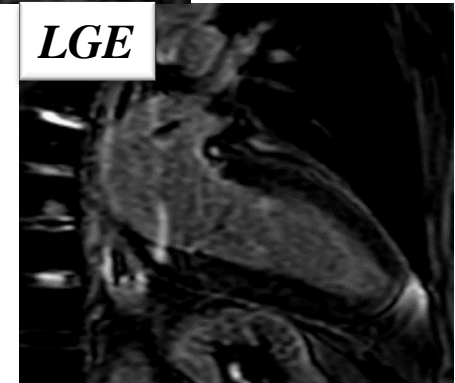
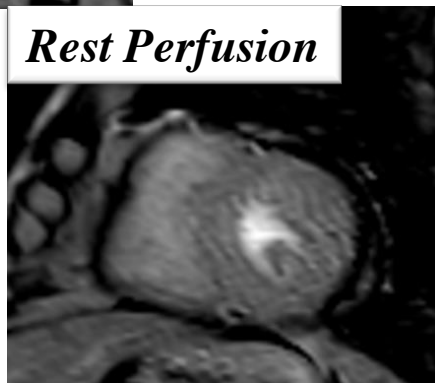
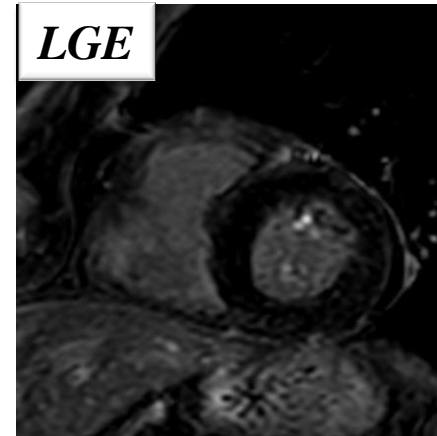
Bifurcation Case-2: CT





Bifurcation Case-2

70's male / Target Lesion: prox. LAD bifur.



Antero-Lateral: Myocardial ischemia (+)

LGE (-), Viability (+)



Co-Medical Case-1

80's female / Target Lesion: prox.-mid. LAD

Diagnosis: AP

Prior intervention:

none

Coronary risk factor:

DM, HT, Dyslipidemia

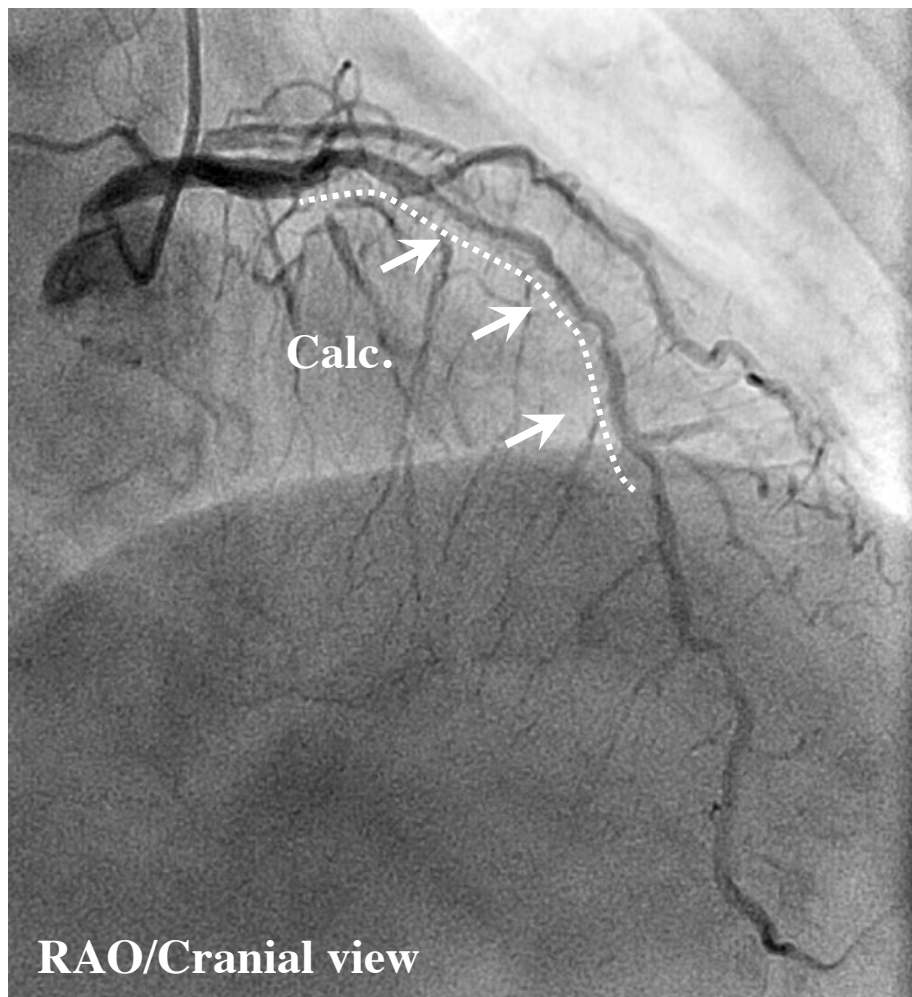
eGFR: 58.3

SYNTAX Score: 40.5

Final CAG findings: '17.04.24

**CAG: prox. LAD 75% (FFR: 0.48),
1st diagonal 75%, LMT 50%,
ost. LCX 75%, mid. LCX 100%,
PD branch 75%**

LV EF (UCG): 62.8%





Co-Medical Case-1: CT

